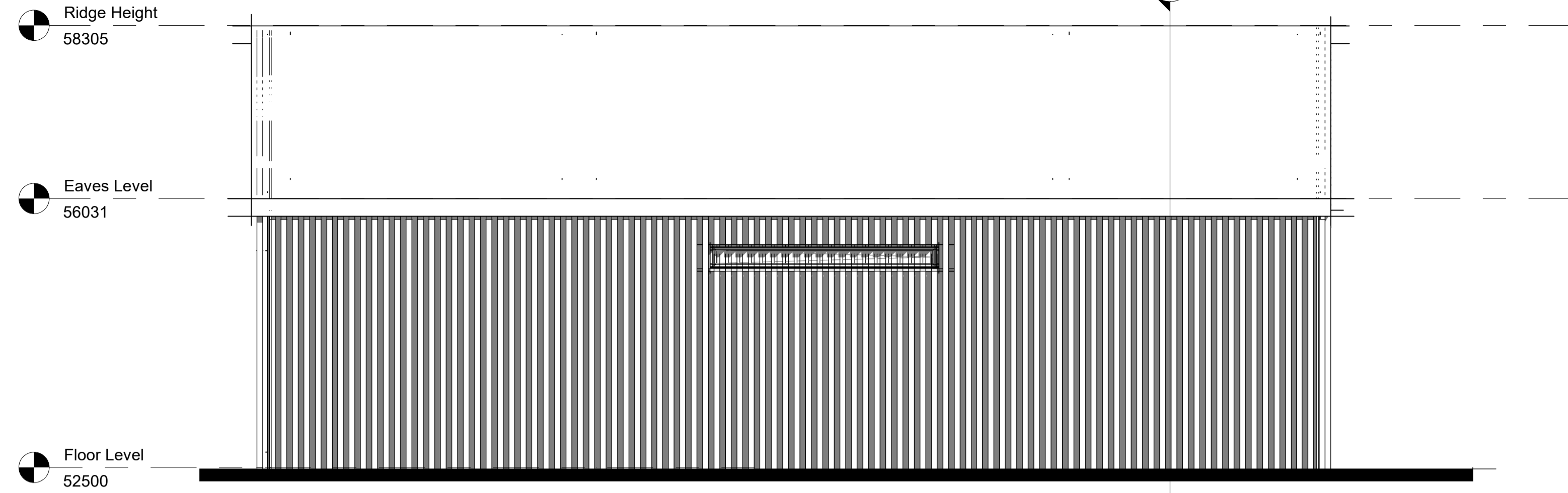
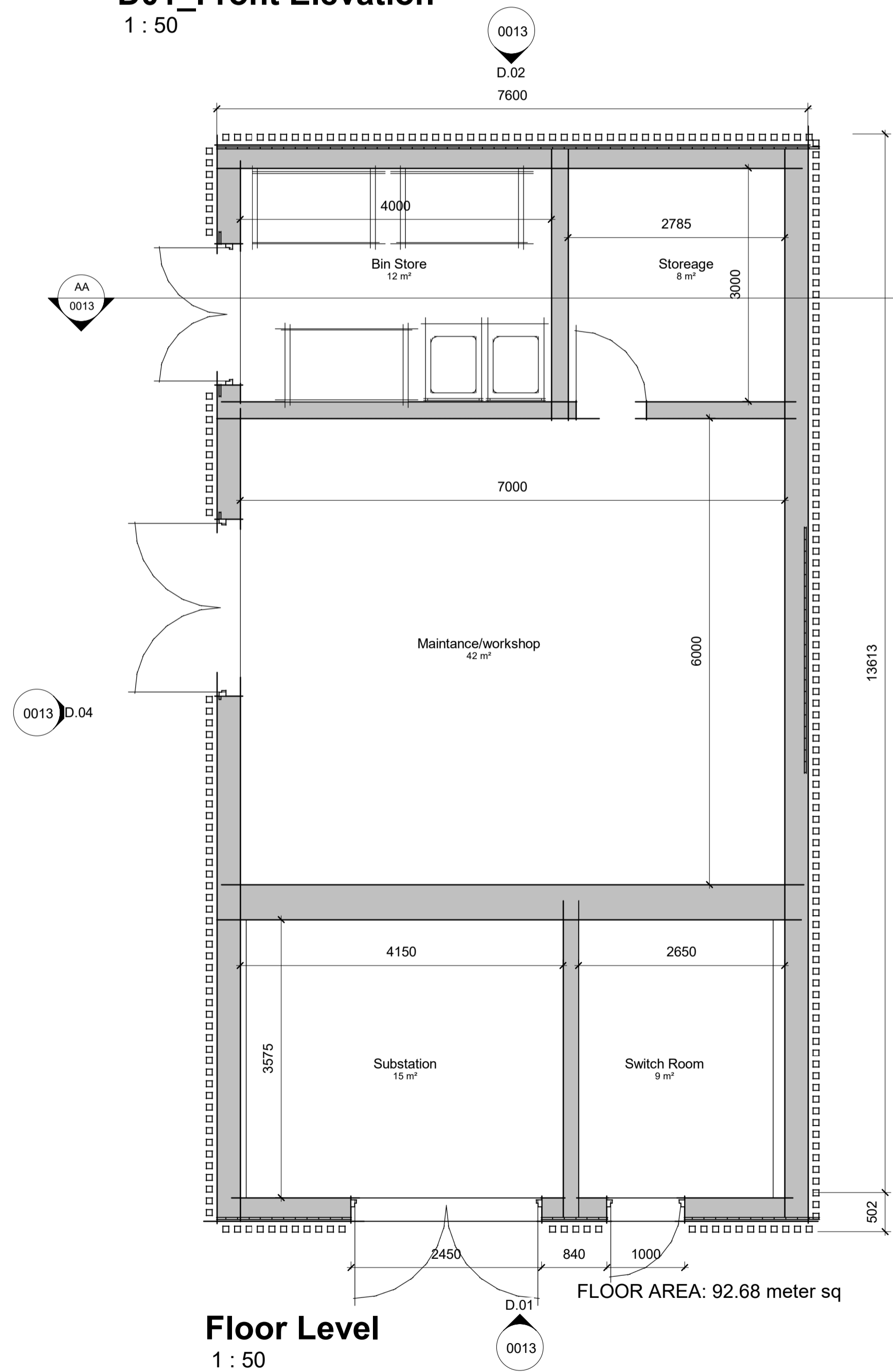


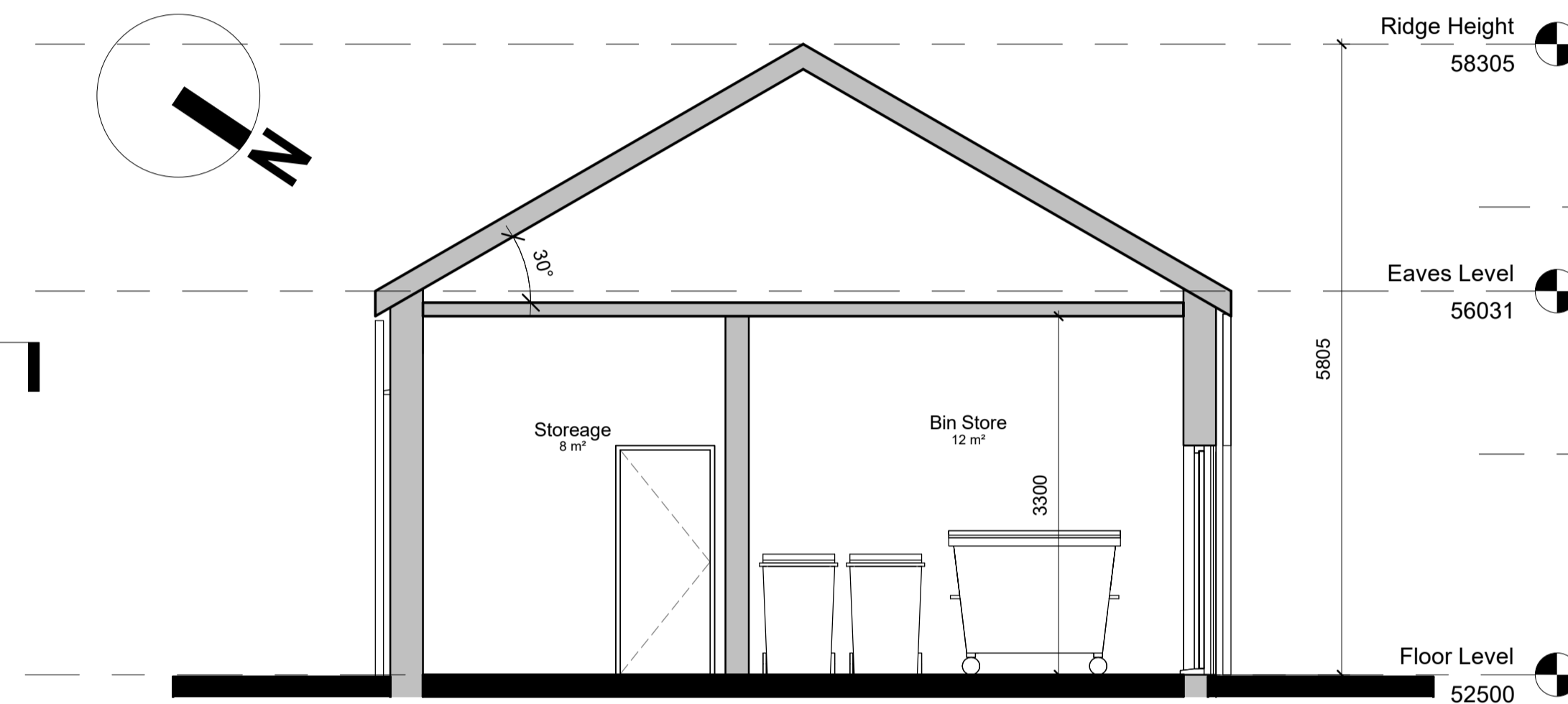
**D01\_Front Elevation**  
1 : 50



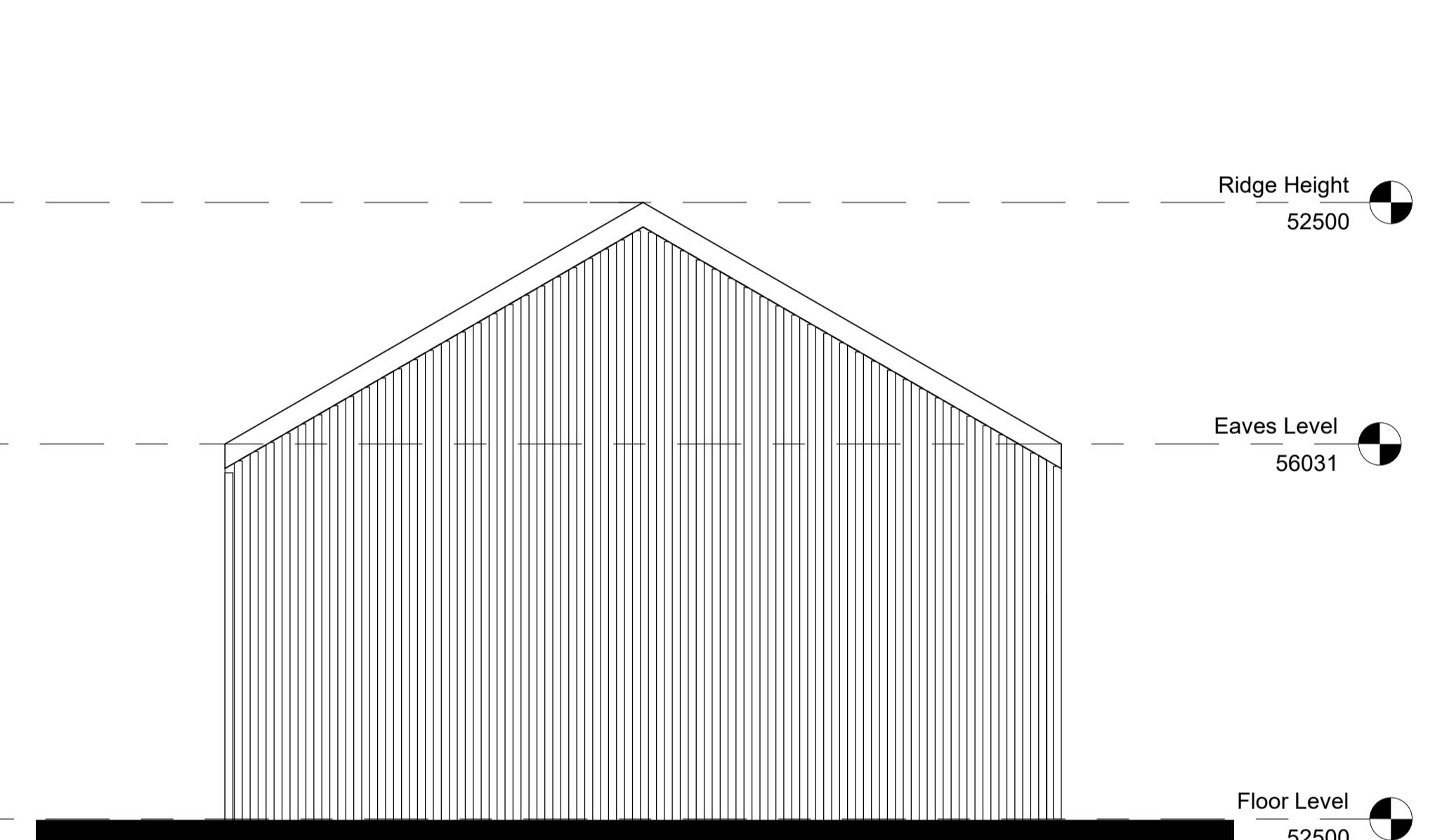
**D03\_Side Elevation**  
1 : 50



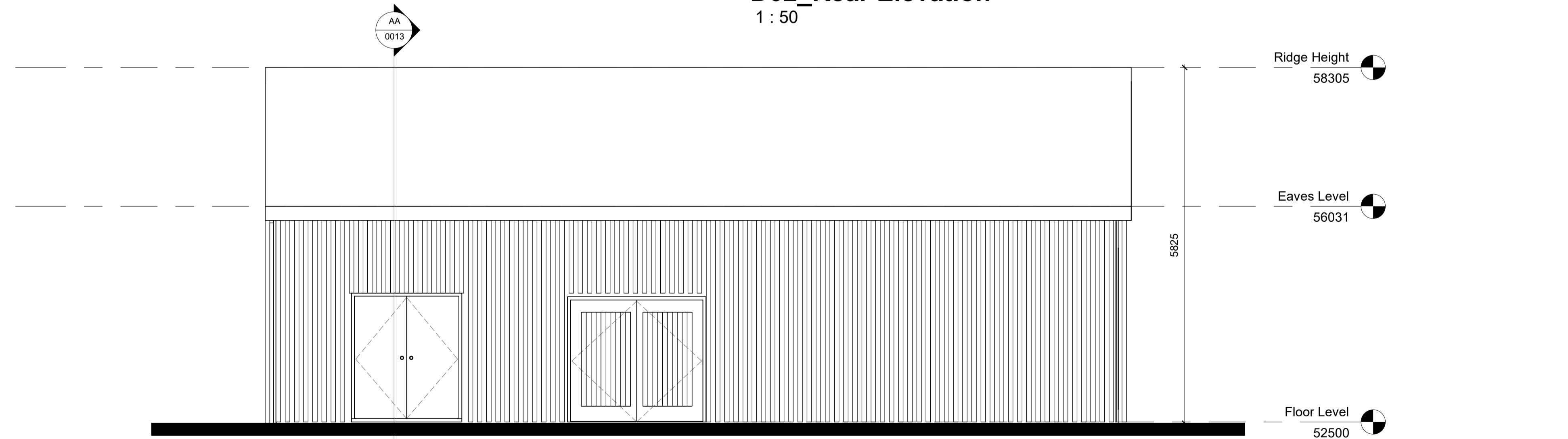
**Floor Level**  
1 : 50



**Section BB**  
1 : 50



**D02\_Rear Elevation**  
1 : 50



**D04\_Side Elevation**  
1 : 50



Community Development & Planning Services  
Regeneration & Development Team

Three Rivers Centre, Lifford, Co Donegal

Tel: (074)9153900 | Fax: (074)9141793 | www.donegalcoco.ie

L. Ward, Director of Community Development & Planning Services

Status Key

SL	Survey
SK	Sketch Design
INFO	Information
PL	Planning - Part 8
DD	Detailed Design
FSC	Fire Safety Cert.
DAC	Dis. Acc. Cert.
T	Tender
C	Construction
CPO	CPO
SF	Safety File
O	Other

Rev	Date	Description	Issued by

Project Title: Creeslough Community Regeneration Project	First Issue Date: 27.07.2023	Status: <b>PL</b>
Location: (Southwest) of St. Michaels Parish Church, Creeslough, Co. Donegal	Drawing No. 0013	Revision: /
Drawing Title: Maintenance yard, Substation & Switch Room	Project No.: CCRP	
Scale: 1 : 50	Drawn By: S O'Donnell	Checked By: J Neils
		Approved By: P Kelly

